



imageRUNNER ADVANCE EQ80

REMANUFACTURED MULTIFUNCTION PRINTERS

Looking after tomorrow, today

Canon

At Canon we're committed to offering customers real, sustainable choices.

We provide innovative products that improve office productivity while having the minimum possible environmental impact.

From the most sophisticated to the simplest solution, we create state-of-the-art workspace technologies to help meet organisations' objectives, not just in document management, but in relation to their wider sustainability targets as well.

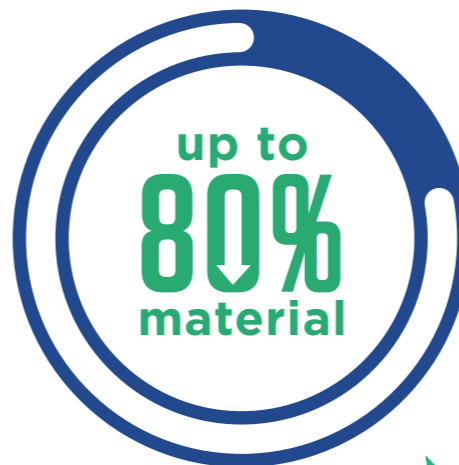
Canon's imageRUNNER ADVANCE EQ80 portfolio is a prime example. It offers high quality, remanufactured, multifunction printers (MFPs), which provide secure and reliable copy, scan and print solutions.

They will fit seamlessly into your document workflows and deliver great benefits to both your business and to the environment.

Applying our long-standing manufacturing expertise, we select the best-selling models from previous years and rebuild them to produce more affordable devices that demand a significantly reduced consumption of raw materials. This in turn lowers the amount of CO₂ that arises from the manufacturing phase of the product lifecycle.

Our imageRUNNER ADVANCE EQ80 mono and colour devices meet the same stringent quality standards as our new models, and carry the same full warranty.

They can help your business to meet its environmental commitments and improve its green credentials, all while saving you money, ensuring you have the right devices for every department and application, and providing a consistent user experience - right across your print fleet.



What is remanufacturing?

“ **Remanufacturing is a comprehensive and rigorous industrial process by which a previously sold, worn, or non-functional product or component is returned to a 'like-new' or 'better-than-new' condition and warranted in performance level and quality.** ”

- Remanufacturing Industries Council

“ **Because remanufacturing recovers a substantial fraction of the materials and value added to a product in its first manufacture, and because it can do this at low additional cost, the resulting products can be obtained at reduced price.** ”

- Springer Link

EQ80 DEFINED

The 'EQ' in EQ80 stands for **Environmental Quotient**.



Up to **80% of the original product's material weight is reused** during manufacturing, helping to avoid waste and reducing the dependency on new raw materials. That's where the '80' comes from.

In addition, through remanufacturing we achieve up to **80% reduction of the CO₂ emissions** associated with the various aspects of manufacturing. (Calculated according to Canon internal methodology. The value may vary depending on the condition of collected products).



EQ80 is Canon's seal of approval for outstanding quality. Every EQ80 product undergoes the same quality assurance procedures as a newly manufactured Canon device.

All EQ80 products adhere to Canon's strict specifications and come with a **guarantee equivalent to that of a new product**.

WHY EQ80 EXISTS

The average life of an MFP before it is replaced is **3-5 years**. (Industry average lease/contract).

More than 2.4 million (approx.) new MFPs are sold in EMEA each year, for the most part replacing existing ones. (Canon market share data).



E-waste is the fastest-growing waste stream in the world and is expected to reach **120 million tonnes per year by 2050**. (UN, 2019).

95% of Europeans say that protecting the environment is important to them. (Eurobarometer: Attitudes of European citizens towards the environment, 2018).



43% of consumers globally expect businesses to be accountable for their environmental impact. (PwC Consumer Insights Survey, 2020).





CANON'S SUSTAINABLE APPROACH

We're passionate about our corporate philosophy of Kyosei: 'living and working together for the common good'.

Our imageRUNNER ADVANCE EQ80 portfolio embodies this philosophy by supporting the circular economy and by helping us reduce the environmental impacts of our business – and by extension, yours.

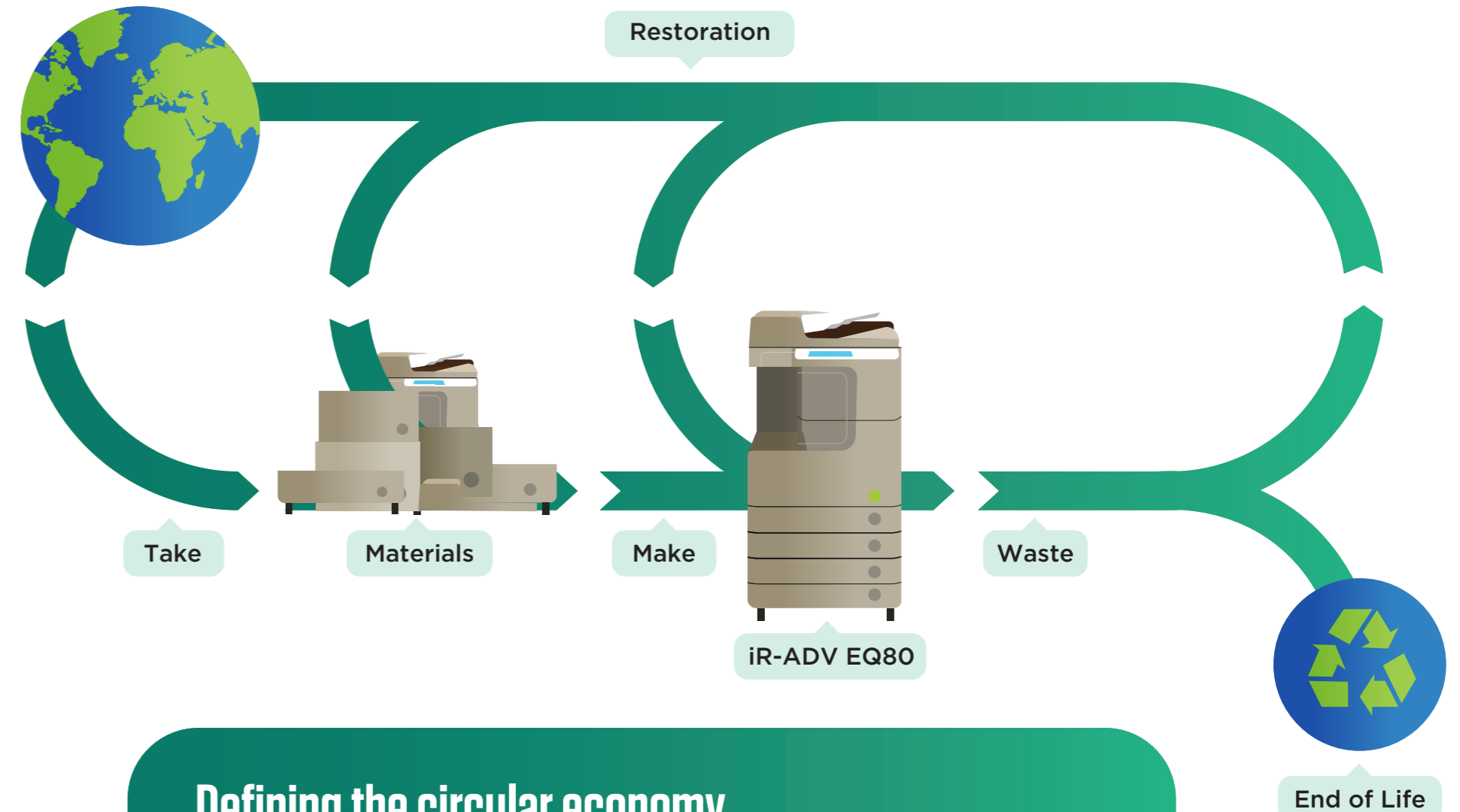
EQ80 forms just one part of our commitment to the environment. We are CDP A-listed for our approach to climate change, and work continuously to reduce our impact on the environment by:

- Reducing life-cycle CO₂ emissions of our products. We achieved an average reduction of 3% per year since 2008, amounting to an overall improvement of 41.3% by 2020. Canon aims to achieve net-zero CO₂ emissions from its business activities by 2050.¹
- Consistently improving the energy efficiency of our products. This has helped us reduce in-use electricity consumption and associated carbon emissions
- Running a global ISO 14001 accredited EMS, ensuring we offer products and services that help customers reduce their environmental impacts
- Operating circular economy initiatives, including our award-winning pan-European cartridge recycling programme

¹<https://global.canon/en/environment/target.html>



For further information about sustainability at Canon EMEA, visit www.canon-europe.com/sustainability/



Defining the circular economy

The circular economy is an alternative to a traditional linear economy (take, make, dispose), which aims to **gradually decouple economic activity from the consumption of finite resources.**

Resources are kept in use for as long as possible and maximum value is extracted from them while in use. Products and materials are then recovered and regenerated at the end of each service life.

THE imageRUNNER ADVANCE EQ80 REMANUFACTURING PROCESS

EQ80 devices are produced via a comprehensive, standardised remanufacturing process, subject to stringent quality controls from start to finish.

With the raw materials saved from remanufacturing one EQ80 instead of manufacturing a new product, Canon can manufacture the equivalent of 238 EOS R cameras.²

Our remanufacturing process delivers up to 80% CO₂ reduction from manufacturing processes. This is equivalent to the CO₂ emissions that arise from one UK household's electricity use for one year.³

² Calculated by reused material weight
³ Household electricity use:
<https://selectra.co.uk/guides/average-consumption-uk>

1



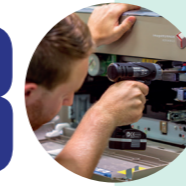
Our best-selling models are collected from throughout Europe and sent to Canon's dedicated remanufacturing facility at Giessen in Germany, where they are checked to ensure suitability for the remanufacturing programme.

2



Once there they are stripped down to the bare frame, every part is thoroughly cleaned, checked for quality and, if necessary, repaired or replaced.

3

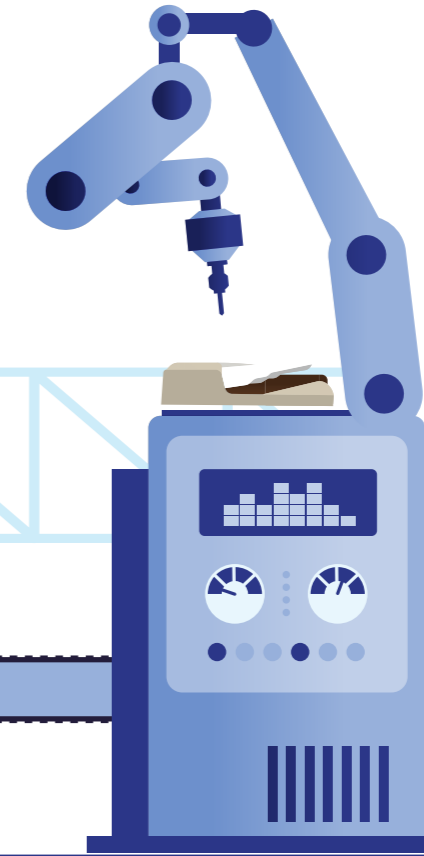
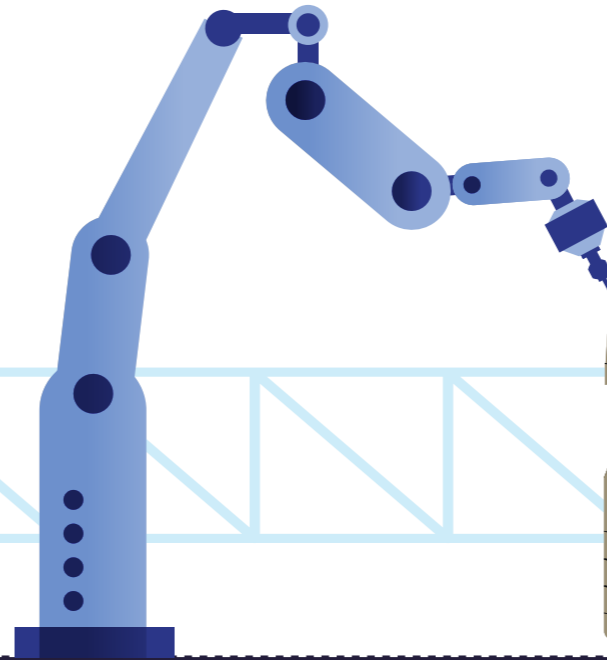
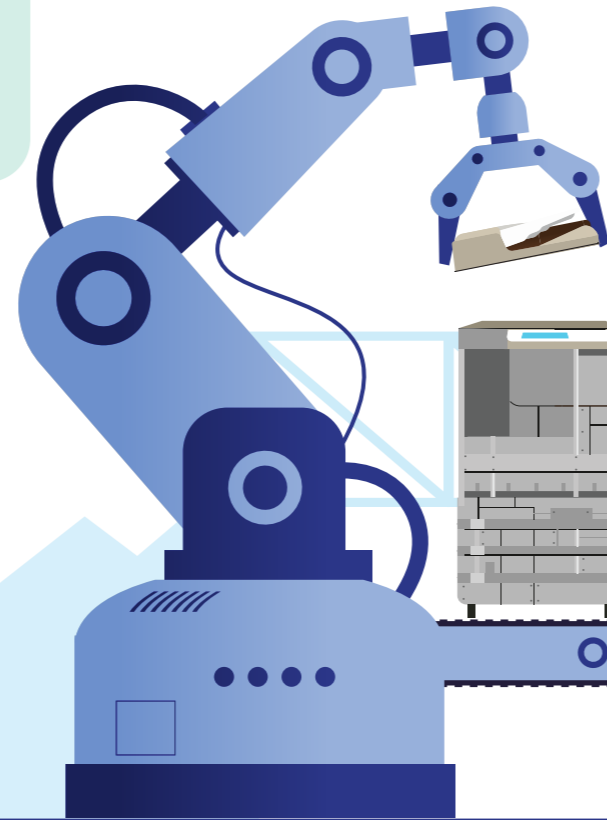


The machine is then reassembled on a factory standard production line, using existing as well as new parts. Hard drives are erased and reformatted and the machine is upgraded with the latest applicable firmware. The counters are set to zero, the machine is assigned a new serial number and given a brand-new factory warranty.

4



Finally, each EQ80 model is put through a testing regimen and given a stringent quality control inspection before it leaves the factory.



OUR 7 KEY EQ80 COMMITMENTS

The machines from our imageRUNNER ADVANCE EQ80 portfolio don't just perform like new – they come with the same guarantees as every newly manufactured Canon product. This means you can look forward to improved work place productivity, safe in the knowledge that your environmental responsibilities have also been addressed.

Every EQ80 device delivers on seven promises.

1 Supporting your environmental objectives
Our EQ80 range has been established with the environment in mind. By choosing one of our EQ80 products, your business boosts the circular economy, contributes to the reduction of waste and carbon dioxide emissions, and promotes the efficient use of resources.

2 Reducing costs
We make sure that every model is very competitively priced compared to a newly manufactured device offering similar functionality. That means a high-quality Canon solution is available for businesses of all sizes and budgetary requirements.

3 Offering our best machines
When we select the devices to be part of our EQ80 range, we only look to our previous best sellers, or those with an outstanding track record, based on the feedback of our customers and partners.



7



Guaranteeing Canon quality

Our products are well known for their performance, durability and reliability, and we want to keep it that way. That's why we make sure every EQ80 device adheres to the same exacting standards as our new models – with a new counter, comparable firmware and quality updates – and comes with equivalent warranty protection.

Maximising fleet investment

We are committed to offering a diverse choice of quality document solutions now and in the future. Our EQ80 devices perfectly complement our range of newly manufactured office machines to fit every business's requirements.

5

Integrating with your document workflows

EQ80 devices are cloud-ready, and can be equipped with our optional cloud-based document management solutions uniFLOW Online and uniFLOW Online Express. This means they can fit seamlessly into your organisation's document workflows both in and out of the office, helping you to progress your digital transformation journey and support hybrid ways of working.

Providing all the functionality you need

Every machine configuration is carefully tailored to offer the functionality, standard security features and accessories to meet the needs of the most demanding offices. EQ80 devices are updated to the latest firmware applicable to devices in the same generation, so offer a familiar user experience consistent with the rest of your fleet.

EQ80 NO-COMPROMISE SUSTAINABILITY FOR YOUR BUSINESS

Build quality, performance and durability equivalent to the original machine.

- ✓ New counter
- ✓ Firmware update based on generation, quality and standard security updates
- ✓ Consistent user experience across print fleet
- ✓ Canon's guarantee and the same productive life span as a brand new device
- ✓ Cloud ready

Supporting environmental and other business objectives.

- ✓ EQ80s promote the efficient use of resources, contribute to the circular economy and minimise carbon emissions from the raw material sourcing, manufacture and shipment stages of the product lifecycle
- ✓ EQ80s enable savings from printing infrastructure through cost efficient technology and investment
- ✓ EQ80s make a valuable contribution to demonstrating your company's commitment to protecting the planet



Contact us today to discover more about how choosing from our imageRUNNER ADVANCE EQ80 portfolio can benefit the environment – and your business.



Canon

Canon Inc.
Canon.com

Canon Europe
canon-europe.com

English Edition
© Canon Europa N.V., 2021

Canon Europe Ltd
3 The Square,
Stockley Park,
Uxbridge,
Middlesex
UB11 1ET
UK